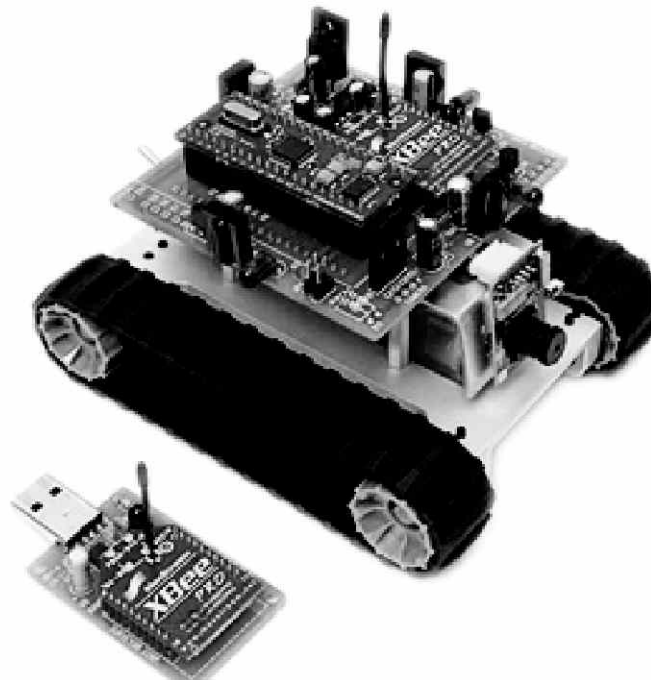


COMPANY PROFILE

Wine Yard Technologies is a Hyderabad, India based Technology Company that is in to product design, services and custom designed projects. The company has high level expertise in cutting edge technologies including embedded software development, real time systems, RFID solutions, GSM, GPS, Zigbee and PLC based factory and building automations,. Wine Yard offers comprehensive engineering solutions based on embedded platform has developed several embedded application for use in areas such as factory and building automations, migration and porting to different hardware and software platforms.

Wine Yard Technologies is an island of innovations, where knowledge meets curiosity, has been setting new branch marks in engineering solutions. Nestled in prime location in the heart of the Hyderabad city, Wine Yard believes in empowering nation by technology, creativity and freedom to ensure that technology is fun.

The team members at Wine Yard upgrade their skill set time-to-time in various advanced technology domains to cater the Industry. More than 200 working professionals, professors and teaching faculty from various universities are immensely benefitted by Work Shops conducted by Wine Yard Technologies on various advanced domains.



Analog Electronics /Digital Design /IC Applications /Sound Engineering



MP43	Implementation of Recordable non volatile audio storage system with high signal to noise ratio with 4-8 KHz sampling rate through high fidelity condenser microphone
MP44	Intelligent pollution control system: Auto ignition cut off for automotives by detecting Carbon Monoxide level at vehicle's silencer with audio visual alert
MP45	Aero dynamic wind mill with reverse charge protection for rural power generation applications
MP46	Next generation alternative energy storage application with Super capacitors / Ultra capacitors
MP47	Solar based E-Uniform for soldiers who work at extreme high temperature or extreme low temperature (same uniform can be used to warm up or cool down body temperature)
MP48	High fidelity two way intercom with musical ring alert system for point to point communication
MP49	Music transmission and reception with high S/N ratio using fiber optic communication
MP50	Step up free adjustable DC to DC converter for range 3.7V to 34V
MP51	High sensitive Alcohol sensor with auto car ignition disable function
MP52	Intelligent IR based automatic highway lighting system with day / night sensor
MP53	Foot step power generation system for rural energy application to run AC and DC loads
MP54	Hand cranked dynamo based energy generation system for emergency headlamp applications for mining workers and engineers who work under ground and dark conditions
MP55	Microhydel power generation system from building roof rain water flow to power AC / DC loads with battery reverse charge protection
WK113	Airport security Luggage scanner system with conveyor belt arrangement
WK114	IR based third eye implementation for Industrial safety with 60dB loud siren audible up to 2 km
WK115	Implementation of high sensitive Wall breaking / Glass Breaking sensor with loud 60dB siren
WK116	Intelligent Fire Detector with automatic water sprinkler system / air blower to avoid fire Accidents
WK118	High Sensitive LDR based Automatic night lamp with morning alarm
WK119	Diamond security system in museums with loud 60dB siren
WK106	Triac based Sound Scanner for Audio Controlled AC 230 V Lamps

Analog Electronics /Digital Design /IC Applications /Sound Engineering

WK102	Intelligent Automatic Street Light Control System using high sensitivity LDR
WK103	Industrial electrical appliances control system using IR Remote (TSOP1738 IR Receiver module)
WK104	Directional Counter for Bottle filling industries with seven segment LED display
WK105	Over / Under Line Voltage Protection for Electrical Appliances with auto cut off on fault conditions
WK108	IR based intelligent Automatic washbasin / mirror lamp controller
WK109	Timer based industrial liquid pump controller with user defined time slots
WK110	Renewable Energy management – Solar based lighting system with inverter and CFL lamp load
WK111	3-phase load safety implementation with auto turn OFF and auto turn ON facility
WK120	Intelligent Automatic Plant Irrigation System with water pump control based on soil moisture condition
WK122	Automatic Transformer Distribution and load sharing System
WK128	Transformer less solid state Power Supply Design
WK129	Triac based AC motor speed control system / Light Dimmer
WK130	Wireless Music transmission and reception by IR communication
WK131	H- Bridge implementation for DC motor direction control for robotic applications
WK132	Fastest finger first for buzzer round in quiz competitions
WK133	PIR based motion sensor for 500W cellar parking light with adjustable time delay and day-night mode
WK138	Error free Sound Activated Switch (Triggers the load on second clap sound)
WK140	Wireless petroleum level sensor using RF communication
WK141	Radio frequency based remote Industrial Appliances control system
WK141	Radio frequency based remote Industrial Appliances control system

WK102	Intelligent Automatic Street Light Control System using high sensitivity LDR
WK103	Industrial electrical appliances control system using IR Remote (TSOP1738 IR Receiver module)
WK104	Directional Counter for Bottle filling industries with seven segment LED display
WK105	Over / Under Line Voltage Protection for Electrical Appliances with auto cut off on fault conditions
WK108	IR based intelligent Automatic washbasin / mirror lamp controller
WK109	Timer based industrial liquid pump controller with user defined time slots
WK110	Renewable Energy management – Solar based lighting system with inverter and CFL lamp load
WK111	3-phase load safety implementation with auto turn OFF and auto turn ON facility
WK120	Intelligent Automatic Plant Irrigation System with water pump control based on soil moisture condition
WK122	Automatic Transformer Distribution and load sharing System
WK128	Transformer less solid state Power Supply Design
WK129	Triac based AC motor speed control system / Light Dimmer
WK130	Wireless Music transmission and reception by IR communication
WK131	H- Bridge implementation for DC motor direction control for robotic applications
WK132	Fastest finger first for buzzer round in quiz competitions
WK133	PIR based motion sensor for 500W cellar parking light with adjustable time delay and day-night mode
WK138	Error free Sound Activated Switch (Triggers the load on second clap sound)
WK140	Wireless petroleum level sensor using RF communication
WK141	Radio frequency based remote Industrial Appliances control system
WK141	Radio frequency based remote Industrial Appliances control system

MP1	Flashing Welcome Message with LED Chaser
MP2	Innovative Remote Locator for Television
MP3	Auto mute for car audio deck / audio system while talking on mobile phone
MP6	Design and implementation of Micro Inverter for CFL lamps
MP8	High Sensitive Electronic Ear (Poor man's hearing aid)
MP9	Automatic Active Phase Selector for uninterrupted load run in rural areas
MP10	Farmer friendly Solar based electric fence for rural agriculture
MP11	High sensitive metal detector for detecting metal objects (Better security system to detect terrorists human bombs)
MP12	Passive infrared based security with remote controlled activation and deactivation
MP13	Implementation of high fidelity multimedia speakers for desktops and PCs
MP16	Inverter with Battery low and over load indicator
MP17	Solar based fan with tagged speed selection for rural people
MP18	Solar based cool cap (wearable electronics: feel the coolness, even in the sunlight)
MP19	Solar based mobile charger for rural areas (Charge your mobile anywhere with sunlight)
MP20	Playing MP3 files from USB storage device
MP22	High sensitive LPG Sensor with gas leak alert buzzer
MP23	Woman Robot (Inspired by nature: Don't touch me....She escapes from your touch, You cant catch her)
MP25	IR based escaping cock robot (Inspired by nature: inspired by nature – escapes from you, if you try to catch it)
MP26	Mobile Phone signal Transmission Detector (Mobile Bug)
MP27	Infrared sensor based intelligent Automatic Soap dispenser
MP28	Solar highway lighting system with auto turn off on day time

MP29	Level indicator for petrol dispensing stations with audio alert system
MP30	Mosquito catching system by UV lamp and axial fan (free from chemicals and toxic. No refills, no smoke and no odor)
MP31	Infrared sensor based intelligent Hand dryer with hot air blower
MP32	Assistive technology – implementation of high sensitive intelligent Blind Stick to assist visually challenged
MP33	Triac based Four step touch dimmer
MP34	Mining safety – implementation of Electronic Nose to detect dangerous gases for alerting mining workers and engineers for preventive actions – (This nose can sense various odors and gases like methane, carbon monoxide, liquid petroleum gas etc - more sensitive than human nose)
MP35	Assistive technology - Implementation of Blind man's Cap with artificial eyes on it to assist visually challenged
MP36	Optically Isolated Fuse blown Indicator with Sound and light indicator
MP37	Real time Car battery monitoring and low voltage alert system.
MP38	Playing MP3 files from memory card
MP39	Pyro electric based Fire Alarm
MP41	Tilt Sensor based Locker safety implementation
MP42	Implementation of Chanting Mantra system with volume Control
	 

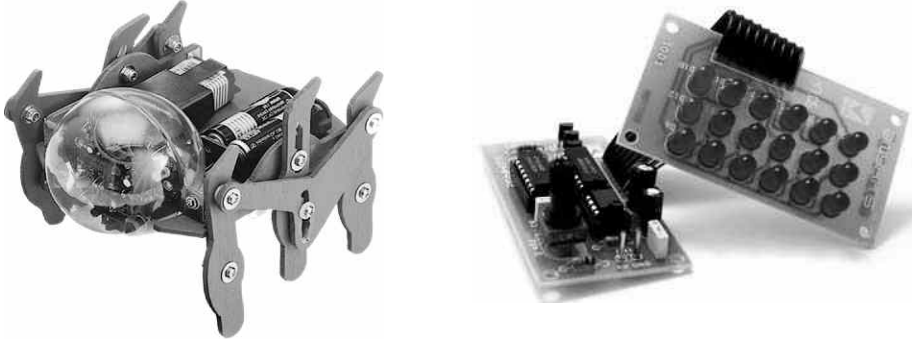
Solar / Wind / Renewable Energy Resource Management

MP45	Aero dynamic wind mill with reverse charge protection for rural power generation applications
MP46	Next generation alternative energy storage application with Super capacitors / Ultra capacitors
MP47	Solar based E-Uniform for soldiers who work at extreme high temperature or extreme low temperature(same uniform can be used to warm up or cool down body temperature)
MP53	Foot step power generation system for rural energy application to run AC and DC loads
MP54	Hand cranked dynamo based energy generation system for emergency headlamp applications for mining workers and engineers who work under ground and dark conditions
MP55	Microhydel power generation system from building roof rain water flow to power AC / DC loads with battery reverse charge protection
WK110	Renewable Energy management – Solar based lighting system with inverter and CFL lamp load
MP10	Farmer friendly Solar based electric fence for rural agriculture
MP17	Solar based fan with tagged speed selection for rural people
MP18	Solar based cool cap (wearable electronics: feel the coolness, even in the sunlight)
MP19	Solar based mobile charger for rural areas (Charge your mobile anywhere with sunlight)
MP28	Solar highway lighting system with auto turn off on day time
MPS2	Medicine Refrigeration for rural and flood affected areas - Fast chilling solar based refrigerator with dual mode battery charging for preserving medicines
MPS3	Solar based air compressor pump for car bike tire inflate and pneumatic industrial controls
MPS4	Solar based high efficient vacuum cleaner capable of capturing even 40 microns small dust particles
WKS6	Real Time Clock based solar LED street light automation using Dallas RTC and I2C protocol
WKS7	Implementation of solar water pump control with four different time slots for power saving applications

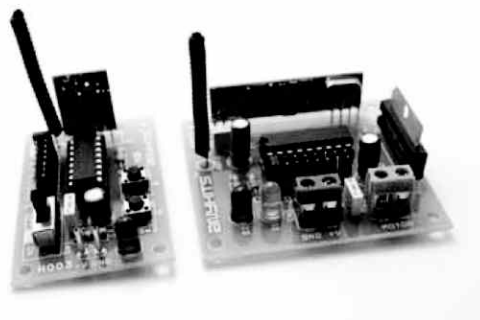
Microcontroller Based Projects

WK235	Highly sensitive biomedical digital heart beat monitoring system
MPMC1	Infrared Remote controlled High Voltage device switching with Electromagnetic Relay using AT89S52 MCU
MPMC2	Interfacing High voltage device to Microcontroller using opto coupler
MPMC3	16 X 2 LCD interfacing in 4 bit method
MPMC4	16 X 2 LCD interfacing in 8 bit method
WK801	AC motor speed control using power Triac with display unit
WK802	Three Phase Load safety implementation with phase fault detector
WK501	PC based Appliances control in a plant (C-Language)
WK502	Communicating to 89S52 MCU through windows hyper terminal using RS-232 communication
WK503	PC Based stepper motor control for robotic applications
WK504	PC Based DC Motor speed control
WK505	PC Based Hi-Tech industrial automation with auto / manual modes of operation
WK203	Petrochemical Level Indicator and Controller for Automation of cotton purification process in spinning mills using 89S52 MCU
WK204	Super sensitive Industrial Security System with Auto dialer and 60dB loud siren
WK205	Coin operated fortune telling system with dancing LED effect
WK206	Embedded Quiz monitoring system with team performance evaluation
WK207	Programmable temperature monitor and controller for industrial boilers & ovens
WK208	High sensitive LDR based power saver for street light control system
WK209	Embedded Rigging free Electronic Voting System with instant results
WK210	Embedded Password based Access Control System using I2C protocol

WK210	Embedded Password based Access Control System using I2C protocol
WK211	Automatic Temperature based Fan Speed Controller
WK212	Embedded Automatic Car Parking System using AT89C51 MCU
WK213	High sensitive IR based Unmanned Railway Gate Control using AT89C51 Microcontroller
WK214	Automatic Room Light control with Visitor Counting for power saving applications in seminar halls
WK215	Embedded automatic two gate interlock for toll tax system
WK216	DC Motor speed control using PWM Technique
WK217	Real Time Clock based industrial automation using Dallas RTC and I2C protocol
WK218	Jogger bench using PWM Technique and H-Bridge with person fall prevent and detection system
WK219	Electronic Notice Board with LED Dot Matrix Display and PS2 key board interfacing for user friendly message entry
WK220	Automatic School Bell with user defined time schedule using I2C protocol
WK221	Implementation of artificial eye for Intelligent Line Following Robot application
WK222	EEPROM Based Prepaid energy meter with auto cut off on no balance
WK223	Digital Code converters BCD to Grey / Excess-3 / 7-segment
WK224	DTMF based Industrial automation and appliances control system for rural and agriculture applications
WK225	Auto turn off for water pump with four different time slots for power saving applications
WK226	Embedded concentration tester – Touch Me Not using AT89S52
WK227	Stepper motor control using AT89S52 for robotic applications
WK228	Automatic Dam Gate Control System with Caution Alarm
WK229	Automatic Active Phase selector for single phase load from three phase supply

WK229	Automatic Active Phase selector for single phase load from three phase supply
WK230	Electronic Private Automatic Branch Exchange System with call forward and call pick up
WK232	RTC based Digital Clock with Seven-segment Display with 12 / 24 hours mode
WK233	Gold and Silver Rate Display System with EEPROM Data Back up System
	 <p style="text-align: center;">Wireless / Wired / DTMF / RF / ZigBee / Fiber Communication Projects</p>
WK502	Communicating to 89S52 MCU through windows hyper terminal using RS-232 communication
MP49	Music transmission and reception with high S/N ratio using fiber optic communication
WK103	Industrial electrical appliances control system using IR Remote (TSOP1738 IR receiver module)
WK130	Wireless Music transmission and reception by IR communication
WK140	Wireless petroleum level sensor using RF communication
WK141	Radio frequency based remote Industrial Appliances control system
MPR1	RF remote controlled metal detecting robot
WK301	Wireless Data Encryption and decryption for secured communication using RF
WK306	Wireless Electrical Apparatus Control System with Speed Control of AC motor in a plant using RF communication
WK307	Wireless DC Motor speed and direction Control using RF communication
WK309	Wireless stepper motor control using RF communication

WK310	Wireless Electronic notice board with Multipoint receiver
WK311	Wireless Stepper Motor Control using IR Communication
WK312	Wireless DC Motor Speed and Direction Control using IR (PWM and H-Bridge)
WK313	Wireless Electrical Apparatus Control System using IR communication
WK332	ZigBee based Secured Wireless Data transmission and Reception
WK333	ZigBee based Wireless Electronic Notice Board with Multi Point Receivers
WK334	Two-way Wireless Data Messaging System for Rural Areas using ZigBee Technology
WK337	RF based tsunami detection and remote alert system with 60dB siren
WK339	ZigBee based wireless remote weather station monitoring system
WK224	DTMF based industrial automation and appliances control system (Control your industrial appliances through a mobile phone from anywhere on the planet)
WK230	Electronic Private Automatic Branch Exchange System with four extensions implementation for office intercommunication
WK204	Supersensitive Security system with Auto dialer (Owner will get alert by a phone call on

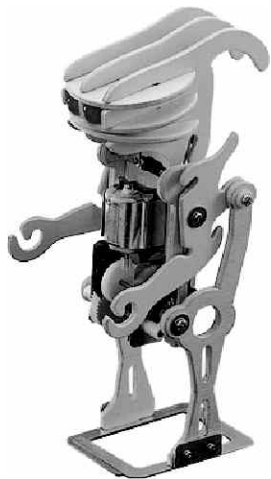


Advanced Robotics

MPR12	Electric pole climbing robot with RF remote control for electrical Line Man assist applications
WKR11	Wireless controlled RF Based pick and place robot with Base Rotation, Elbow And Wrist Motion With a Functional Gripper
MPR2	RF remote controlled metal detecting robot to assist bomb detecting squad on terrorists attacks
WKR3	Five axis Robotic Arm With Base Rotation, Elbow And Wrist Motion With a Functional Gripper
WKR4	Intelligent Autonomous six legged robot to operate on uneven surfaces
WK12	IR based Intelligent Autonomous self guided vehicle Robot for defense applications
WK221	Artificial eye implementation for Intelligent Line Following Robot
WK9	Mobile Phone controlled DTMF based robotic boat to travel in water for ocean research applications
MPR8	RF controlled Robotic boat to travel in water for ocean research applications
WKR9	Wireless RF Controlled Fire Fighting Robot with high pressure air blower / water sprinkler
MPR10	Wireless RF Controlled LPG Detecting Robot for underground and mining applications
MPR11	RF controlled robotic wheel chair for physically challenged with obstacle identification and musical alert system
MP23	Woman Robot (Inspired by nature: Don't touch me...She escapes from your touch, You cant catch her)
MP25	IR based escaping cock robot (Inspired by nature: inspired by nature – escapes from you, if you try to catch it)
PC Based Projects	
WK501	PC based Appliances control in a plant (C-Language)
WK502	Communicating to 89S52 MCU through windows hyper terminal using RS-232 communication
WK503	PC Based stepper motor control for robotic applications
WK504	PC Based DC Motor speed control
WK505	PC Based Hi-Tech industrial automation with auto / manual modes of operation

PIC 16F877A Microcontroller Based Projects

WK601	Data Transmission and Reception from PIC 16F877A MCU to PC's Hyper Terminal using RS-232 Communication using PIC Microcontroller
WK603	Petrochemical Level Indicator and Controller for Automation of cotton purification process in spinning mills using PIC Microcontroller
WK605	Speed and Direction Control of DC Motor using PIC Microcontroller
WK606	Real Time Clock based industrial automation using Dallas RTC and I2C protocol using PIC Microcontroller
WK607	Temperature Monitoring on Seven-segment Display using PIC Microcontroller
WK608	Stepper Motor Control using PIC Microcontroller
WK609	Embedded Rigging free Electronic Voting System using PIC Microcontroller
WK610	Password based Access Control System protocol using PIC Microcontroller
WK611	16 X 2 LCD Interfacing to PIC Microcontroller
WK612	Interfacing High voltage device to PIC Microcontroller using opto coupler
WK613	Infrared Remote controlled High Voltage device switching with Electromagnetic Relay using PIC controller



Advanced VLSI Design

MPV1	Design and implementation of Error Detector and Corrector (EDAC) Unit using VHDL
MPV2	Design and implementation of different adders using VHDL
MPV3	FIFO design and implementation using VHDL
MPV4	Design and implementation of Linear feedback Shift register using VHDL
MPV5	Design and implementation of RAM and ROM using VHDL
MPV6	Design and Implementation of UART using VHDL
MPV7	Design and implementation of Carry Save Array Arithmetic Multiplier
MPV8	Design and implementation of Content Addressable Memory using VHDL
MPV9	Design and implementation of SPI (Serial Peripheral Interface) using VHDL
MPV10	Design and implementation of Seven Segment decoder and bi-directional shift register
MPV11	Design and implementation of Look Ahead Carry Generator using VHDL
MPV12	Prototyping of Embedded processor using VHDL
MPV13	Design and implementation of Sequence Detector using VHDL
MPV14	Design and implementation of Digital Code Converters using VHDL
MPV15	Design and implementation of Electronic Voting Machine design using VHDL
MPV16	Design and implementation of Baud rate Generator using VHDL
MPV17	Design and implementation of unsigned serial divider using VHDL
MPV18	Design and implementation of signed adder, subtractor using VHDL
MPV19	Design and implementation of ALU using VHDL
MPV20	VHDL Design of central processing unit (CPU)

Electrical / Power Electronics / Solar / Energy Management Projects

MP45	Aero dynamic wind mill with reverse charge protection for rural power generation applications
MP46	Next generation alternative energy storage application with Super capacitors / Ultra capacitors
MP47	Solar based E-Uniform for soldiers who work at extreme high temperature or extreme low temperature(same uniform can be used to warm up or cool down body temperature)
MP50	Step up free adjustable DC to DC converter for range 3.7V to 34V
MP52	Intelligent IR based automatic highway lighting system with day / night sensor
MP53	Foot step power generation system for rural energy application to run AC and DC loads
MP54	Hand cranked dynamo based energy generation system for emergency headlamp applications for mining workers and engineers who work under ground and dark conditions
MP55	Microhydel power generation system from building roof rain water flow to power AC / DC loads with battery reverse charge protection
WK113	Airport security Luggage scanner system with conveyor belt arrangement
WK114	IR based third eye implementation for Industrial safety with 60dB loud siren audible up to 2 km
WK115	Implementation of high sensitive Wall breaking / Glass Breaking sensor with loud 60dB siren
WK116	Intelligent Fire Detector with automatic water sprinkler system / air blower to avoid fire Accidents
WK118	High Sensitive LDR based Automatic night lamp with morning alarm
WK119	Diamond security system in museums with loud 60dB siren
WK106	Triac based Sound Scanner for Audio Controlled AC 230 V Lamps
WK102	Intelligent Automatic Street Light Control System using high sensitivity LDR
WK103	Industrial electrical appliances control system using IR Remote (TSOP1738 IR receiver module)
WK104	Directional Counter for Bottle filling industries with seven segment LED display
WK105	Over / Under Line Voltage Protection for Electrical Appliances with auto cut off on fault conditions

WK108	IR based intelligent Automatic washbasin / mirror lamp controller
WK109	Timer based industrial liquid pump controller with user defined time slots
WK110	Renewable Energy management – Solar based lighting system with inverter and CFL lamp load
WK111	3-phase load safety implementation with auto turn OFF and auto turn ON facility
WK120	Intelligent Automatic Plant Irrigation System with water pump control based on soil moisture condition
WK122	Automatic Transformer Distribution and load sharing System
WK128	Transformer less solid state Power Supply Design
WK129	Triac based AC motor speed control system / Light Dimmer
WK131	H- Bridge implementation for DC motor direction control for robotic applications
WK133	PIR based motion sensor for 500W cellar parking light with adjustable time delay and day-night mode
WK138	Error free Sound Activated Switch (Triggers the load on second clap sound)
WK140	Wireless petroleum level sensor using RF communication
WK141	Radio frequency based remote Industrial Appliances control system
MP6	Design and implementation of Micro Inverter for CFL lamps
MP9	Automatic Active Phase Selector for uninterrupted load run in rural areas
MP10	Farmer friendly Solar based electric fence for rural agriculture
MP11	High sensitive metal detector for detecting metal objects (Better security system to detect terrorists / human bombs)
MP12	Passive infrared based security with remote controlled activation and deactivation
MP16	Inverter with Battery low and over load indicator
MP17	Solar based fan with tagged speed selection for rural people
MP18	Solar based cool cap (wearable electronics: feel the coolness, even in the sunlight)

MP19	Solar based mobile charger for rural areas (Charge your mobile anywhere with sunlight)
MP22	High sensitive LPG Sensor with gas leak alert buzzer
MP27	Infrared sensor based intelligent Automatic Soap dispenser
MP28	Solar highway lighting system with auto turn off on day time
MP29	Level indicator for petrol dispensing stations with audio alert system
MP30	Mosquito catching system by UV lamp and axial fan (free from chemicals and toxic. No refills, no smoke and no odor)
MP31	Infrared sensor based intelligent Hand dryer with hot air blower
MP33	Triac based Four step touch dimmer
MP34	Mining safety – implementation of Electronic Nose to detect dangerous gases for alerting mining workers and engineers for preventive actions – (This nose can sense various odors and gases like methane, carbon monoxide, liquid petroleum gas etc - more sensitive than human nose)
MP36	Optically Isolated Fuse blown Indicator with Sound and light indicator
MP37	Real time Car battery monitoring and low voltage alert system.
MP39	Pyroelectric based Fire Alarm
MP41	Tilt Sensor based Locker safety implementation
MPS2	Medicine Refrigeration for rural and flood affected areas - Fast chilling solar based refrigerator with dual mode battery charging for preserving medicines
MPS3	Solar based air compressor pump for car bike tire inflate and pneumatic industrial controls
MPS4	Solar based high efficient vacuum cleaner capable of capturing even 40 microns small dust particles
WKS6	Real Time Clock based solar LED street light automation using Dallas RTC and I2C protocol
WKS7	Implementation of solar water pump control with four different time slots for power saving applications

Microcontroller Based Electrical Projects

MPMC1	Infrared Remote controlled High Voltage device switching with Electromagnetic Relay using AT89S52 MCU
MPMC2	Interfacing High voltage device to Microcontroller using opto coupler
WK801	AC motor speed control using power Triac with display unit
WK802	Three Phase Load safety implementation with phase fault detector
WK501	PC based Appliances control in a plant (C-Language)
WK503	PC Based stepper motor control for robotic applications
WK504	PC Based DC Motor speed control
WK505	PC Based Hi-Tech industrial automation with auto / manual modes of operation
WK203	Petrochemical Level Indicator and Controller for Automation of cotton purification process in spinning mills using 89S52 MCU
WK204	Super sensitive Industrial Security System with Auto dialer and 60dB loud siren
WK207	Programmable temperature monitor and controller for industrial boilers & ovens
WK208	High sensitive LDR based power saver for street light control system
WK210	Embedded Password based Access Control System using I2C protocol
WK211	Automatic Temperature based Fan Speed Controller
WK212	Embedded Automatic Car Parking System using AT89C51 MCU
WK213	High sensitive IR based Unmanned Railway Gate Control using AT89C51 Microcontroller
WK214	Automatic Room Light control with Visitor Counting for power saving applications in seminar halls
WK215	Embedded automatic two gate interlock for toll tax system
WK216	DC Motor speed control using PWM Technique
WK217	Real Time Clock based industrial automation using Dallas RTC and I2C protocol

WK218	Jogger bench using PWM Technique and H-Bridge with person fall prevent and detection system
WK220	Automatic School Bell with user defined time schedule using I2C protocol
WK222	EEPROM Based Prepaid energy meter with auto cut off on no balance
WK224	DTMF based Industrial automation and appliances control system for rural and agriculture applications
WK225	Auto turn off for water pump with four different time slots for power saving applications
WK227	Stepper motor control using AT89S52 for robotic applications
WK228	Automatic Dam Gate Control System with Caution Alarm
WK229	Automatic Active Phase selector for single phase load from three phase supply
WK306	Wireless Electrical Apparatus Control System with Speed Control of AC motor in a plant using RF communication
WK307	Wireless DC Motor speed and direction Control using RF communication
WK309	Wireless stepper motor control using RF communication
WK311	Wireless Stepper Motor Control using IR Communication
WK312	Wireless DC Motor Speed and Direction Control using IR (PWM and H-Bridge)
WK313	Wireless Electrical Apparatus Control System using IR communication
WK337	RF based tsunami detection and remote alert system with 60dB siren
WK339	ZigBee based wireless remote weather station monitoring system

Mini Projects for CSE / IT Java Domain

MPJ1	Web search engine using page ranking algorithm
MPJ2	G talk in java
MPJ3	Face Detection using Eigen faces
MPJ4	Electronic claim
MPJ5	Secured Internet Banking system
MPJ6	Steganography
MPJ7	Hospital management System
MPJ8	Human Resource management system
MPJ9	Image Comparisons
MPJ10	Secured Online shopping system
MPJ11	Bug Tracking System
MPJ12	Customer Relationship management System (CRM)
MPJ13	Student Information System
MPJ14	College management system
MPJ15	Online Library management
MPJ16	Online exam
MPJ17	Tic Tac game
MPJ18	Employee Payroll system
MPJ19	ATM
MPJ20	Pharmacy Management system
MPJ21	Job Portal
MPJ22	Game online
MPJ23	Photo gallery
MPJ24	Phone book
MPJ25	Login System

Industry Oriented Mini Projects with Crash Course & D-CAD Certificate

MPN1	Budget Planner
MPN2	CT (Consignment Tracker)
MPN3	Fincorp - Cash Control
MPN4	Online property search
MPN5	ORAS (Online Activity Reporting)
MPN6	Warehouse executer
MPN7	Web Cryptology
MPN8	Yard and Ship planning system
MPN9	Bungle Handling
MPN10	Online Project Approval system
MPN11	Classified websites
MPN12	E monitoring For Women
MPN13	College Admin & Placemen
MPN14	GLOBAL RESUME SERVICES
MPN15	Online Fast Food
MPN16	Software project management tool
MPN17	E-Post Office
MPN18	Hotel Management n/w
MPN19	Mingle Box
MPN20	Medical care
MPN21	Hospital Management System
MPN22	Art Gallery

Industry Oriented Mini Projects with Crash Course & D-CAD Certificate

MPN23	movie world project
MPN24	FRENCH courier
MPN25	Budget Analysis
MPN26	World Recipe
MPN27	Project Scheduler
MPN28	Information Computing Solution
MPN29	Client Server Based Live Meeting
MPN30	Back to My Village
MPN31	Defect Tracking System:
MPN32	Voyage Management
MPN33	Implementation of web enabled e - shopping cart based on multiple processing
MPN34	E2M Conference
MPN35	Immigration Portal for Global Market
MPN36	Quality Management System
MPN37	E-Greeting Threshold
MPN38	The Fraud Detection in Online Banking
MPN39	Financial analysis & reporting system
MPN40	Global navigation
MPN41	Mail client
MPN42	Manage-prison's
MPN43	Medical care
MPN44	Travel agency management
MPN45	Trouble shooting management
MPN46	Ware house management
MPN47	Web Based Purchase Requests
MPN48	Web alerts
MPN49	school management
MPN50	Call Center Executer
MPN51	Information Computing Solution
MPN52	Speed Cash System

MATLAB Simulink based Power Electronics Projects

MS1	Three phase load safety implementation and auto cut off load on phase absence
MS2	Implementation of Over / Under voltage protector with auto cut off on line fault conditions
MS3	Design of micro inverter for powering 40W CFL lamps with intelligent battery charge control
MS4	Automatic transformer load distribution and sharing system
MS5	Automatic active phase selector for single phase load applications
MS6	Implementation of H-Bridge for DC motor direction control
MS7	Triac based four step dimmer
MS8	Speed control of DC motor using pulse width modulation technique
MS9	Optically isolated fuse blown indicator
MS10	Battery monitoring system with low voltage alert
MS11	DC to DC step up converter
MS12	Electric fence charger for rural agriculture applications
MS13	Implementation of Solid state switch for auto power off on mains failure
MS14	Precision digital AC power controller using SCR
MS15	Self switching regulated power supply
MS16	Temperature based AC motor speed control using optical isolator and SCR
MS17	Intelligent battery charger with auto turn off
MS18	Implementation of Electronic Motor Starter to protect motor from voltage fluctuations
MS19	Simulation of servo controlled voltage stabilizer with closed loop control system
MS20	Speed control of AC motor using power triac by firing angle control technique

Guidelines for Out Station Students:

- Wine Yard Technologies is in the heart of the Hyderabad city, and well connected by city bus service from all corners of Greater Hyderabad.
- City Buses Details:
 - From Secunderabad Railway Station: 10K, 10H, 10F, 10L, 45
 - From Kothi: 9F, 9K
 - From Uppal: 113F, 113K
- Hostels and paying guest accommodation is available near our organization on daily, weekly and monthly basis.
- Rs. 100/- to 250/- will be charged per day including breakfast, lunch and dinner with accommodation, and the charge depends on the luxury they provide.
- Students can opt hostel facility for daily basis / weekly basis or monthly basis according to their project duration
- Separate hostels are available near to our organization for girls with good security

Note: Wine Yard Technologies do not run hostels / paying guest accommodations on. We assist students to find better facilities for their accommodation

All Rights Reserved ©2011

This document can not be distributed, shared or copied without the prior permission of the Managing Director, Wine Yard Technologies, as this document is protected under copyrights act.